

# Zen 6642 SD Silver Air 66" x 42" x 23"

SKU: ZEN6642SD-SAIR



## TECHNICAL SPECIFICATIONS

Drain	Side drain
Pump Location(s): Select 1	Std. = Standard / Alt LF/RF Optional
Bath Weight (empty)	180 lbs
Gallons to Operate	57-83

## ELECTRICAL SPECIFICATIONS

Motor/Pump	(1) 115v 20AMP GFCI Circuits
------------	------------------------------

## BATHERS: 2

### INSTALLATION

•	DECK (D)
•	UNDER MOUNT (U)
•	ALCOVE (A)
	FREESTANDING (F)
	CLAWFOOT (L)
	PEDESTAL (P)

## SILVER AIR

Jet &  
Control  
placement  
may vary



## STANDARD FEATURES & ACCESSORIES for SILVER AIR

### JETS

12 Classic Air Jets Sidewall ○

### PUMPS

1.0 Air Power 3-Speed Warm Air Pump  
Quiet Pad Anti-Vibration Mounted Pump

### CONTROLS

Air Switch On/Off Control(s)  
Automatic Purge & Dry Cycle Control

### PURITY

HydroCleanse

### STANDARD ACCESSORIES

EZ Level Adjustable Legs  
FDA Recipe Non-Toxic Food & Beverage Grade  
Plumbing (primarily)  
30 Point Quality Assurance Factory Test

## REQUIREMENTS

Pump Location(s): Select 1

Electrical: one 115v 20AMP GFCI Circuit

**Tub should not be supported by the lip in any way.**

**Level tub & screw or glue EZ Level adjustable legs to sub floor.**

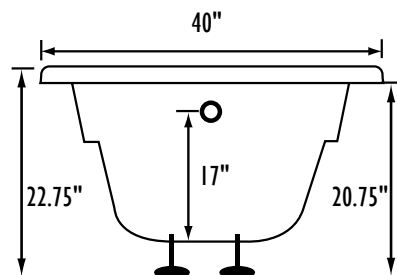
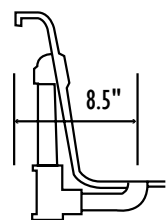
**CUT OUT DIMENSIONS:**

**OVALS:** A template will be provided

**RECTANGLES:** Subtract 1" to 1.5" from length & width for hole cut out size

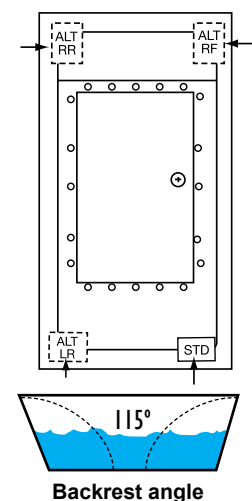
**EZ CLEAN CAST ACRYLIC**

**LIMITED LIFETIME WARRANTY**

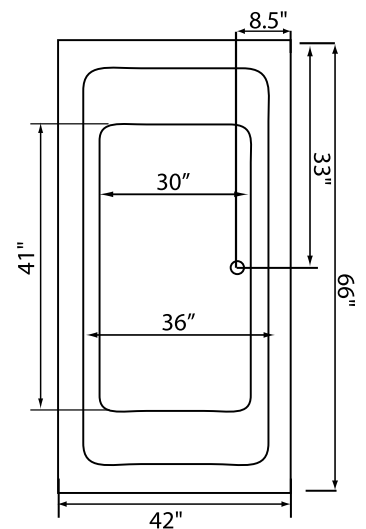


Bath includes EZ Level Legs

**INSTALLATION WILL NOT REQUIRE MORTAR BEDDING**



Backrest angle



Some standard & most alternate pump locations may stickout past perimeter of the bath 1"-3". **NOTE:** Graphics may not be to scale. Specifications and features are subject to change without notice and are  $\pm .25"$ . All final measurements should be taken from tub on site. Access 18"x 18" or larger is required for each pump. Consult your contractor for installation requirements.