

Zen 6636 SD Platinum Air 66" x 36" x 23"

SKU: ZEN6636SD-PAIR



TECHNICAL SPECIFICATIONS	
Drain	Side drain
Pump Location(s): Select 2	Std. = Standard / Alt LF/RF Optional
Bath Weight (empty)	165 lbs
Gallons to Operate	53-78
ELECTRICAL SPECIFICATIONS	
Motor/Pump	(1) 115v 20AMP GFCI Circuits
Whisper Flo Heat Pump System	(2) 115v 20AMP GFCI Circuit

STANDARD FEATURES & ACCESSORIES for PLATINUM AIR

JETS

34 EZ Clean Air Jets
 HTT Leg Therapy Air Massage Jets **X**
 HTT Back Therapy Air Massage Jets **X**

PUMPS

1.25 Air Power Variable Speed, Pulse & Wave heated Air Pump
 Quiet Pad Anti-Vibration Mounted Pump
 WhisperFlo Heat Pump System with Control & Ecobond Foam Insulation
 (must select Pump Locations)

HEATERS

Stainless Steel Electric Heater
 Warm Back Rest Tubing Zone

CONTROLS

Air Switch On/Off Control(s) for Chromatherapy & Whisper Flo Pump
 Variable Speed Air Massage Control
 Automatic Purge & Dry Cycle Control

PURITY

HydroClean Water Purity System
 HydroCleanse

BATHERS: 2

INSTALLATION

- DECK (D)
- UNDER MOUNT (U)
- ALCOVE (A)
- FREESTANDING (F)
- CLAWFOOT (L)
- PEDESTAL (P)

Jet &
Control
placement
may vary



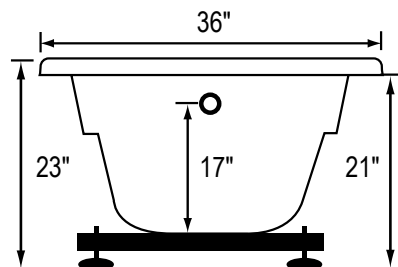
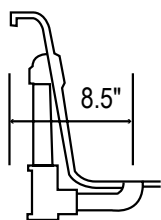
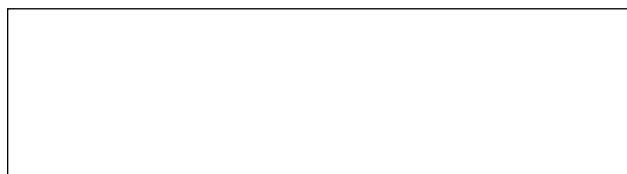
STANDARD ACCESSORIES

Grab Bar(s) - 1-on Side Drain Baths - White, Biscuit, Bone,
 Brushed Nickel, Polished Chrome
 Chromatherapy Lighting
 Deluxe Cable Drain - White, Biscuit, Bone, Brushed Nickel,
 Oil Rubbed Bronze, Polished Chrome,
 Deluxe Cushion Pillow
 EZ Level Base
 FDA Recipe Non-Toxic Food & Beverage Grade
 Plumbing (primarily)
 30 Point Quality Assurance Factory Test

REQUIREMENTS

Pump Locations: Select 2
 Electrical: Three 115v 20AMP GFCI Circuits
 Drain and Grab Bars: Select Color / Finish
Tub should not be supported by the lip in any way.
Level tub & screw or glue EZ Level adjustable legs to sub floor.
CUT OUT DIMENSIONS:
OVALS: A template will be provided
RECTANGLES: Subtract 1" to 1.5" from length & width for hole
 cut out size


EZ CLEAN CAST ACRYLIC
LIMITED LIFETIME WARRANTY  **US ANSI**
TEXTURED FLOOR

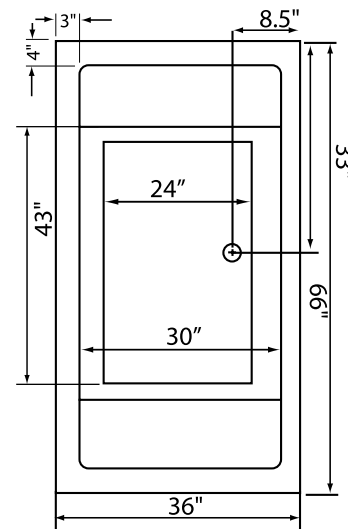
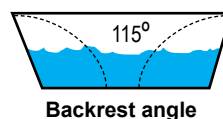
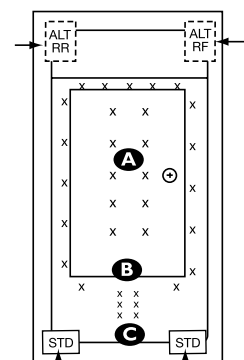


square
lip profile

Bath includes EZ Level Base

INSTALLATION WILL NOT REQUIRE MORTAR BEDDING

- A** X **HTT® Leg Therapy Air Massage System** includes 10 Air Jets on the floor. Optional on Combo Plat and Combo Gold Series
- B** X **6 Jet HTT® Back Massage System:** N/A on Combo Series-Standard on Plat series
- C**  **Warm Back Tubing Zone**



Some standard & most alternate pump locations may stickout past perimeter of the bath 1"-3". **NOTE: Graphics may not be to scale.**
 Specifications and features are subject to change without notice and are $\pm .25"$. All final measurements should be taken from tub on site.
 Access 18"x 18" or larger is required for each pump. Consult your contractor for installation requirements.