

Zen 632 Platinum Water Jet 72" x 32" x 23"

SKU: ZEN632-PWJ



PLATINUM WATER JET

TECHNICAL SPECIFICATIONS

Drain	End drain
Pump Configuration: Select 2	Std. = Standard / Alt LF/RF Optional
Bath Weight (empty)	185 lbs
Gallons to Operate	67-85

ELECTRICAL SPECIFICATIONS

Motor/Pump	(2) 115v 20AMP GFCI Circuits
Inline Stainless Steel Heater	(1) 115v 20AMP GFCI Circuit

BATHERS: 1

INSTALLATION

- DECK (D)
- UNDER MOUNT (U)
- ALCOVE (A)
- FREESTANDING (F)
- CLAWFOOT (L)
- PEDESTAL (P)

Jet &
Control
placement
may vary



STANDARD FEATURES & ACCESSORIES for PLATINUM WATER JET

JETS

15 Water Jets
Back Massage System(s) (7 Jets)
Neck Massage Pillow (2 Jets) (⊕ ⊕)
Sole Soother Jet(s) (⊗)
Accumassage Back, Neck ⊕
Ultra Flow Jets (⊖)

PUMPS

Two 2.25 Hydrowave 3-speed Pump (End Drain Tubs)
Quiet Pad Anti-Vibration Mounted Pump

HEATERS

Stainless Steel Electric Heater

CONTROLS

Air Switch On/Off Control(s) For Chromotherapy Lighting
Air Switch On/Off with digital Temperature Readout Control
3 Speed Massage: High, Medium or Low

PURITY

HydroClean Water Purity System
HydroCleanse

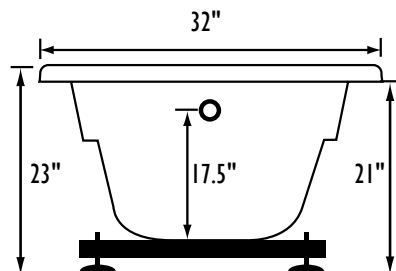
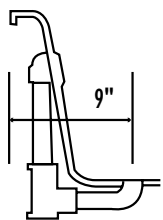
STANDARD ACCESSORIES

Grab Bar(s) - 2 on End Drain baths - White, Biscuit, Bone,
Brushed Nickel, Polished Chrome
Chromotherapy Lighting
Deluxe Cable Drain - White, Biscuit, Bone, Brushed Nickel,
Oil Rubbed Bronze, Polished Chrome
Deluxe Cushion Pillow on two person baths
Neck Massage Pillow
EZ Level Base
FDA Recipe Non-Toxic Food & Beverage Grade Plumbing (primarily)
30 Point Quality Assurance Factory Test

REQUIREMENTS

Pump Locations: Select 2
Electrical: three 115v 20AMP GFCI Circuits
Drain and Grab Bars: Select Color / Finish
Tub should not be supported by the lip in any way.
Level tub & screw or glue EZ Level adjustable legs to sub floor.
CUT OUT DIMENSIONS:
OVALS: A template will be provided
RECTANGLES: Subtract 1" to 1.5" from length & width for hole
cut out size

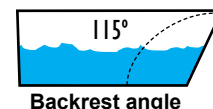
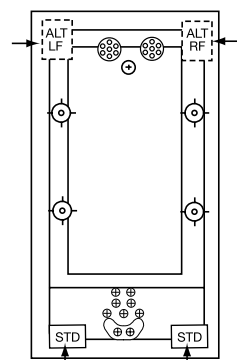
EZ CLEAN CAST ACRYLIC c **US ANSI**
LIMITED LIFETIME WARRANTY



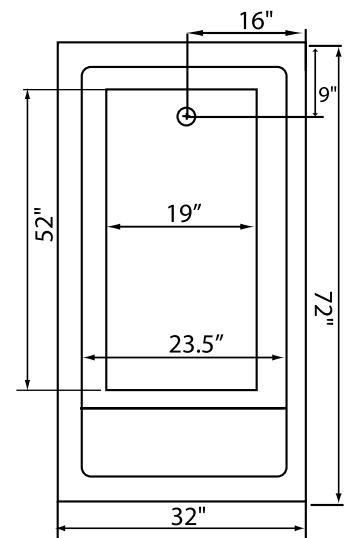
Bath include EZ Level Base

INSTALLATION WILL NOT REQUIRE MORTAR BEDDING

square
lip profile



Backrest angle



Some standard & most alternate pump locations may stickout past perimeter of the bath 1"-3". **NOTE: Graphics may not be to scale.**
Specifications and features are subject to change without notice and are $\pm .25"$. All final measurements should be taken from tub on site.
Access 18"x 18" or larger is required for each pump. Consult your contractor for installation requirements.