

60" x 30" x 23"



BATHERS: 1	
INSTALLATION	
	DECK (D)
	UNDER MOUNT (U)
•	ALCOVE (A)
	FREESTANDING (F)
	CLAWFOOT (L)
	PEDESTAL (P)

Jet &
Control
placement
may vary



Integral Skirt
w magnetic
access panel



STANDARD ACCESSORIES

Mood Light

Lift & Turn Drain - White, Biscuit, Bone, Brushed Nickel,
Oil Rubbed Bronze, Polished Chrome

Deluxe Cushion Pillow

Integral Skirt with Magnetic Access Panel

EZ Level Adjustable Legs

FDA Recipe Non-Toxic Food & Beverage Grade

Plumbing (primarily)

30 Point Quality Assurance Factory Test

REQUIREMENTS

Pump Locations: Select 2

Electrical: two 115v 20amp GFCI Circuits

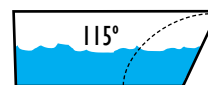
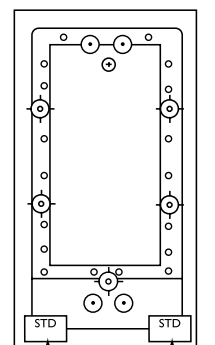
Tub should not be supported by the lip in any way. Level tub & screw or glue adjustable legs to sub floor.

CUT OUT DIMENSIONS:

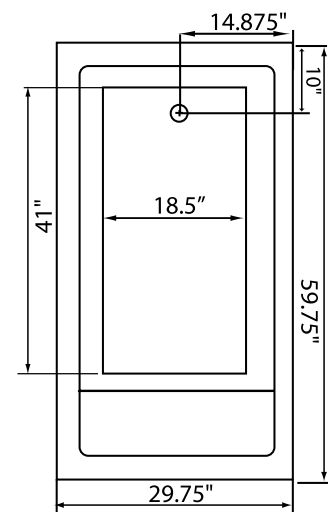
OVALS: A template will be provided

RECTANGLES: Subtract 1" to 1.5" from length & width for hole cut out size

cULus ANSI



Backrest angle



NOTE: Graphics may not be to scale. Specifications and features are subject to change without notice and are $\pm .25"$. All final measurements should be taken from **tub on site**. Access 18"x 18" or larger is required for each pump. Some pump locations and plumbing may extend beyond the perimeter of the bath.