

# Zen Oval 7236 SD Silver Combination

SKU: ZENOVAL7236SD-SCB



72" x 36" x 23"

## SILVER COMBINATION

### TECHNICAL SPECIFICATIONS

Drain	Side drain
Pump Location(s): Select 2	Std. = Standard / Alt LF/RF Optional
Bath Weight (empty)	160 lbs
Gallons to Operate	77-102

### ELECTRICAL SPECIFICATIONS

Motor/Pump	(2) 115v 20AMP GFCI Circuits
Inline Stainless Steel Heater	(Opt.) 115v 20AMP GFCI Circuit

### BATHERS: 2

### INSTALLATION

•	DECK (D)
•	UNDER MOUNT (U)
	ALCOVE (A)
	FREESTANDING (F)
	CLAWFOOT (L)
	PEDESTAL (P)

Jet &  
Control  
placement  
may vary



## STANDARD FEATURES & ACCESSORIES for SILVER COMBINATION

### JETS

21 Air & Water Massage Jets  
Accumassage Back, Neck Jets  
Ultra Flow Jets   
Micro Flow Jets   
Classic Air Jets

### PUMPS

2.25 Hydropower 1-speed Pump  
1.0 Air Power 3-Speed Warm Air Pump  
Quiet Pad Anti-Vibration Mounted Pump

### CONTROLS

Air Switch On/Off Control(s)  
Automatic Purge & Dry Cycle Control

### PURITY

HydroClean Water Purity System  
HydroCleanse

### STANDARD ACCESSORIES

Mood Light  
Lift & Turn Drain - White, Biscuit, Bone, Brushed Nickel,  
Oil Rubbed Bronze, Polished Chrome  
Deluxe Cushion Pillow  
EZ Level Adjustable Legs  
FDA Recipe Non-Toxic Food & Beverage Grade  
Plumbing (primarily)  
30 Point Quality Assurance Factory Test

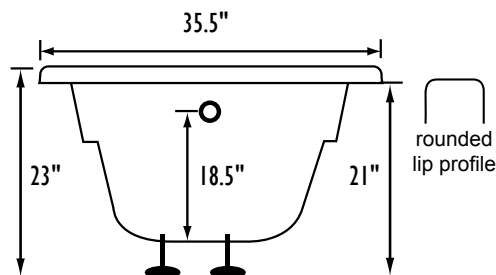
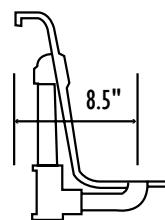
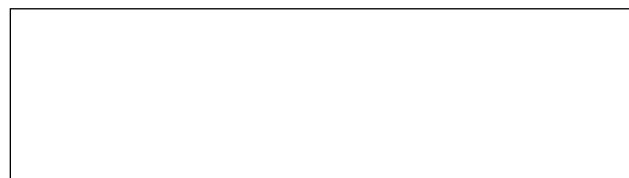
### REQUIREMENTS

Pump Locations: Select 2  
Electrical: two 115v 20AMP GFCI Circuits  
**Tub should not be supported by the lip in any way.**  
**Level tub & screw or glue EZ Level adjustable legs to sub floor.**  
**CUT OUT DIMENSIONS:**

**OVALS:** A template will be provided

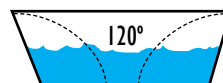
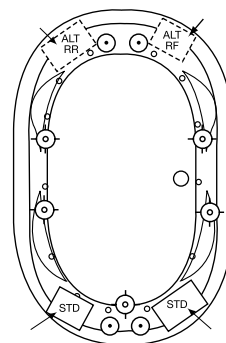
**RECTANGLES:** Subtract 1" to 1.5" from length & width for hole cut out size

**EZ CLEAN CAST ACRYLIC**  
**LIMITED LIFETIME WARRANTY**

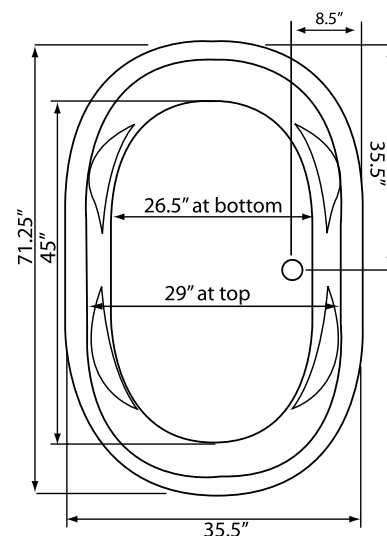


Bath includes EZ Level Legs

**INSTALLATION WILL NOT REQUIRE MORTAR BEDDING**



Backrest angle



Some standard & most alternate pump locations may stickout past perimeter of the bath 1"-3". **NOTE: Graphics may not be to scale.**  
Specifications and features are subject to change without notice and are  $\pm .25"$ . All final measurements should be taken from tub on site.  
Access 18"x 18" or larger is required for each pump. Consult your contractor for installation requirements.