

# Tahoe 6644 Silver Combination 66" x 44" x 24"

SKU: TAHOE6644-SCB



## TECHNICAL SPECIFICATIONS

Drain	Side drain
Pump Location(s): Select 2	Std. = Standard / Alt LF/RF Optional
Bath Weight (empty)	165 lbs
Gallons to Operate	47-75

## ELECTRICAL SPECIFICATIONS

Motor/Pump	(2) 115v 20AMP GFCI Circuits
Inline Stainless Steel Heater	(Opt.) 115v 20AMP GFCI Circuit

## BATHERS: 2

### INSTALLATION

•	DECK (D)
	UNDER MOUNT (U)
	ALCOVE (A)
	FREESTANDING (F)
	CLAWFOOT (L)
	PEDESTAL (P)

Jet &  
Control  
placement  
may vary




## SILVER COMBINATION



## STANDARD FEATURES & ACCESSORIES for SILVER COMBINATION

### JETS

21 Air & Water Massage Jets  
Accumassage Back, Neck Jets

Ultra Flow Jets   
Micro Flow Jets   
Classic Air Jets 

### PUMPS

2.25 Hydropower 1-speed Pump  
1.0 Air Power 3-Speed Warm Air Pump  
Quiet Pad Anti-Vibration Mounted Pump

### CONTROLS

Air Switch On/Off Control(s)  
Automatic Purge & Dry Cycle Control

### PURITY

HydroClean Water Purity System  
HydroCleanse

### STANDARD ACCESSORIES

Mood Light  
Lift & Turn Drain - White, Biscuit, Bone, Brushed Nickel,  
Oil Rubbed Bronze, Polished Chrome  
Deluxe Cushion Pillow  
EZ Level Adjustable Legs  
FDA Recipe Non-Toxic Food & Beverage Grade  
Plumbing (primarily)  
30 Point Quality Assurance Factory Test

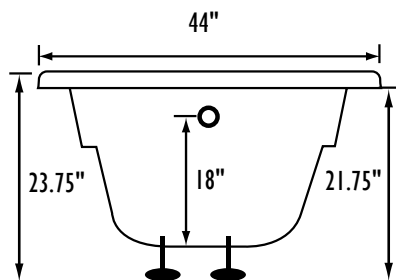
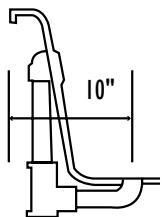
### REQUIREMENTS

Pump Locations: Select 2  
Electrical: two 115v 20AMP GFCI Circuits  
**Tub should not be supported by the lip in any way.**  
**Level tub & screw or glue EZ Level adjustable legs to sub floor.**  
**CUT OUT DIMENSIONS:**

**OVALS:** A template will be provided

**RECTANGLES:** Subtract 1" to 1.5" from length & width for hole  
cut out size


**EZ CLEAN CAST ACRYLIC**  
**LIMITED LIFETIME WARRANTY** 

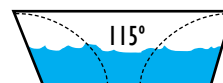
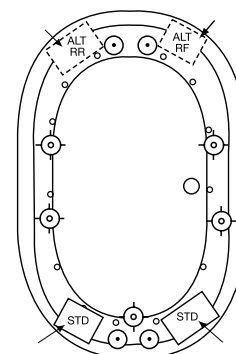


Bath includes EZ Level Legs

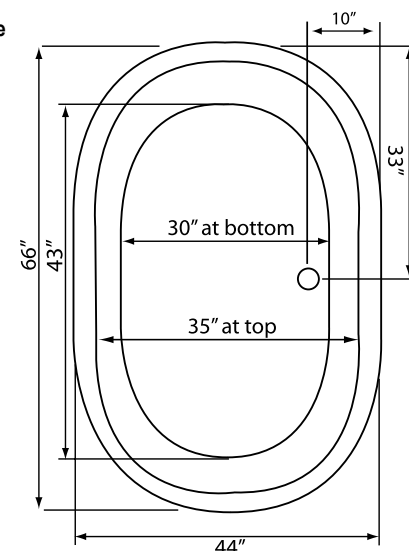
**INSTALLATION WILL NOT REQUIRE MORTAR BEDDING**

rounded  
lip profile

- A** X **HTT® Leg Therapy Air Massage System** includes 10 Air Jets on the floor. Optional on Combo Plat and Combo Gold Series
- B** X **6 Jet HTT® Back Massage System:** N/A on Combo Series-Standard on Plat series
- C**  **Warm Back Tubing Zone**



Backrest angle



Some standard & most alternate pump locations may stickout past perimeter of the bath 1"-3". **NOTE: Graphics may not be to scale.**  
Specifications and features are subject to change without notice and are  $\pm .25"$ . All final measurements should be taken from tub on site.  
Access 18"x 18" or larger is required for each pump. Consult your contractor for installation requirements.