

Rosabella Silver Combination 72" x 42" x 27.5"

PRODUCT NUMBER: ROSABELLA-SCB-K



SILVER COMBINATION

TECHNICAL SPECIFICATIONS	
Drain	Side drain - Required - specify finish
Pump Location(s)	Standard
Bath Weight (empty)	225 lbs
Gallons to Operate	77-112
ELECTRICAL SPECIFICATIONS	
Motor/Pump	(2) 115v 20AMP GFCI Circuits
Inline Stainless Steel Heater	(Opt.) 115v 20AMP GFCI Circuit

BATHERS: 2	
INSTALLATION	
	DECK (D)
	UNDER MOUNT (U)
	ALCOVE (A)
•	FREESTANDING (F)
	CLAWFOOT (L)
	PEDESTAL (P)

Jet & Control placement may vary

Space available for deck mounted or floor mounted faucet



JETS

21 Air & Water Massage Jets
Accumassage Back, Neck Jets
Ultra Flow Jets
Micro Flow Jets
Classic Air Jets

PUMPS

2.25 Hydropower 1-speed Pump
1.0 Air Power 3-Speed Warm Air Pump
Quiet Pad Anti-Vibration Mounted Pump

CONTROLS

Air Switch On/Off Control(s)
Automatic Purge & Dry Cycle Control

PURITY

HydroClean Water Purity System
HydroCleanse

STANDARD ACCESSORIES

Mood Light
Deluxe Cushion Pillow
FDA Recipe Non-Toxic Food & Beverage Grade Plumbing (primarily)
30 Point Quality Assurance Factory Test

REQUIREMENTS

Pump Location: **Standard**

Electrical: two 115v 20AMP GFCI Circuits

EZ CLEAN CAST ACRYLIC

LIMITED LIFETIME WARRANTY

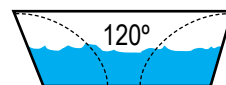
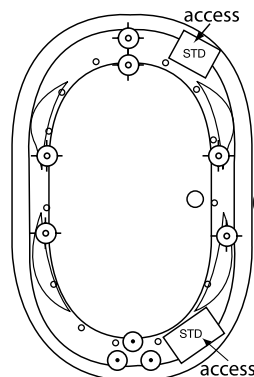
DRAIN REQUIRED

with integral overflow and Flush Press -
Select finish: Brushed Nickel, Oil Rubbed Bronze, Polished Chrome (not included)

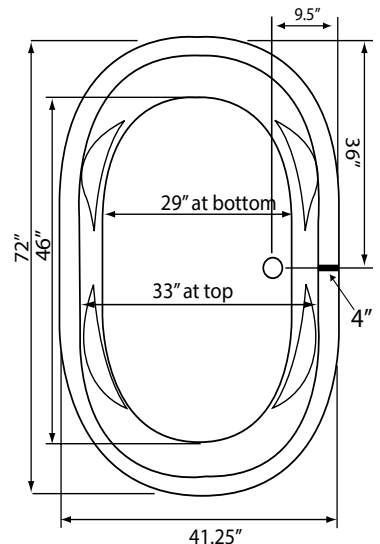
FAUCET

Either Deck Mount or Floor Mount (not included)

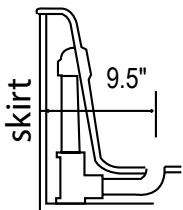
- A** X HTT® Leg Therapy Air Massage System includes 10 Air Jets on the floor. Optional on Combo Plat and Combo Gold Series
- B** X 6 Jet HTT® Back Massage System: N/A on Combo Series-Standard on Plat series
- C** Warm Back Tubing Zone



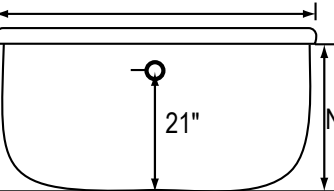
Backrest angle



2 Piece Construction
41.25"



27.5"



4" rounded lip profile

Optional Access

Some standard & most alternate pump locations may stickout past perimeter of the bath 1"-3". NOTE: Graphics may not be to scale. Specifications and features are subject to change without notice and are $\pm .25"$. All final measurements should be taken from tub on site. Access 18"x 18" or larger is required for each pump. Consult your contractor for installation requirements.