

Heavenly Platinum Combination Jet

72" x 36" x 20"

SKU: HEAVENLY-PCB



Platinum Combination Jet

TECHNICAL SPECIFICATIONS	
Drain	Side drain
Pump Location(s): Select 3	Std. = Standard / Alt LF/RF Optional
Bath Weight (empty)	165 lbs
Gallons to Operate	43-68
ELECTRICAL SPECIFICATIONS	
Motor/Pump	(3) 115v 20AMP GFCI Circuits
Inline Stainless Steel Heater	(1) 115v 20AMP GFCI Circuit

BATHERS: 2	
INSTALLATION	
•	DECK (D)
	UNDER MOUNT (U)
	ALCOVE (A)
	FREESTANDING (F)
	CLAWFOOT (L)
	PEDESTAL (P)

Jet &
Control
placement
may vary



STANDARD FEATURES & ACCESSORIES for Platinum Combination Jet

JETS

38 Air & Water Massage Jets
Back Massage System(s) (7 Jets)
Neck Massage Pillow (2 Jets) (⊕ ⊕)
Sole Soother Jet(s) (⊗)
Accumassage Back & Neck Jets (⊕)
Ultra Flow Jets (⊙)
Classic Air Jets (○)
EZ Clean Air Jets (optional) (X)

PUMPS

Two-3.25 Hydrowave 3-speed Pumps (Side Drain Tubs)
1.25 Air Power Variable Speed, Pulse & Wave heated Air Pump
Quiet Pad Anti-Vibration Mounted Pump

HEATERS

Stainless Steel Heater
Warm Back Rest Tubing Zone

CONTROLS

Air Switch On/Off for Chromatherapy Lighting
Air Switch On/Off with digital Temperature Readout Hydro Pumps
Electronic Variable Speed Air Massage Control with Automatic
Purge & Dry Cycle Control Air Pump
3 Speed Massage: High, Medium or Low

PURITY

HydroClean Water Purity System
HydroCleanse

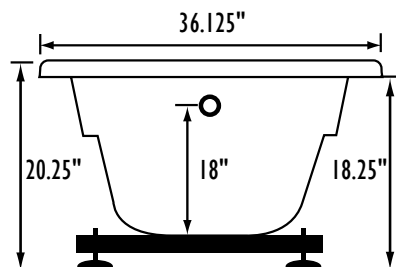
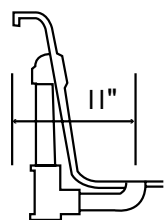
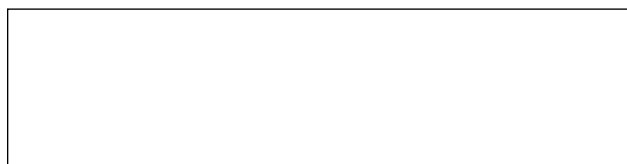
STANDARD ACCESSORIES

Grab Bar(s) - 1 on Side Drain Baths
White, Biscuit, Bone, Brushed Nickel, Polished Chrome
Chromatherapy Lighting
Deluxe Cable Drain - White, Biscuit, Bone, Brushed Nickel,
Oil Rubbed Bronze, Polished Chrome
Deluxe Cushion Pillow on 2 person baths
Neck Massage Pillow
EZ Level Base
FDA Recipe Non-Toxic Food & Beverage Grade Plumbing (primarily)
30 Point Quality Assurance Factory Test

REQUIREMENTS

Pump Locations: Select 3
Electrical: Four 115v 20AMP GFCI Circuits
Cable Drain and Grab Bars: Select Color / Finish
Tub should not be supported by the lip in any way.
Level tub & screw or glue EZ Level adjustable legs to sub floor.
CUT OUT DIMENSIONS:
OVALS: A template will be provided
RECTANGLES: Subtract 1" to 1.5" from length & width for hole cut out size

EZ CLEAN CAST ACRYLIC  **us ANSI**
LIMITED LIFETIME WARRANTY

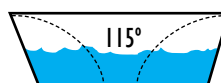
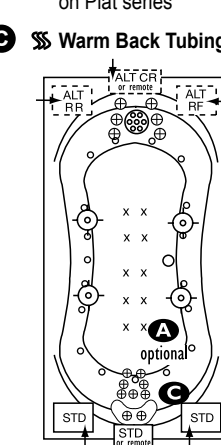


Bath includes EZ Level Base

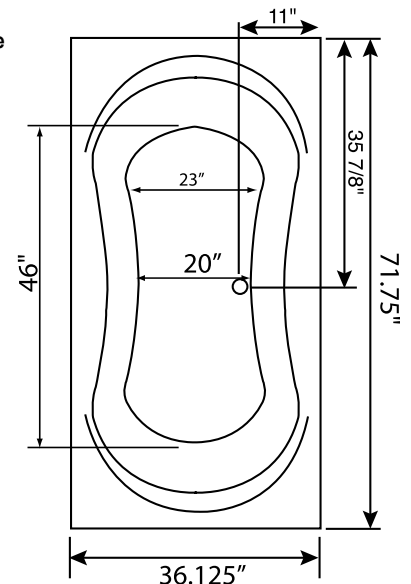
INSTALLATION WILL NOT REQUIRE MORTAR BEDDING

rounded
lip profile

- A** X HTT® Leg Therapy Air Massage System includes 10 Air Jets on the floor. Optional on Combo Plat and Combo Gold Series
- B** X 6 Jet HTT® Back Massage System: N/A on Combo Series-Standard on Plat series
- C** ⌘ Warm Back Tubing Zone



Backrest angle



NOTE: Graphics may not be to scale. Specifications and features are subject to change without notice and are $\pm .25"$. All final measurements should be taken from **tub on site**. Access 18"x 18" or larger is required for each pump. Some pump locations and plumbing may extend beyond the perimeter of the bath.